

MSCI EAFE Index

An index that provides access to developed markets outside the United States

As of 6/30/2020

Objective

Capture equity performance from developed markets countries excluding the U.S. and Canada¹

Approach

Cap weighted international

Holdings

909 large and mid cap companies

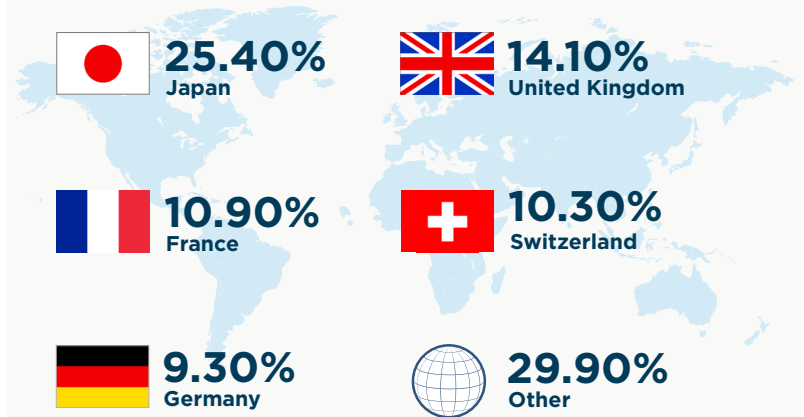
Features

Exposure to factors including value, yield and low volatility relative to a broad global index²

Ticker

MXEA

Country weights



Historical performance



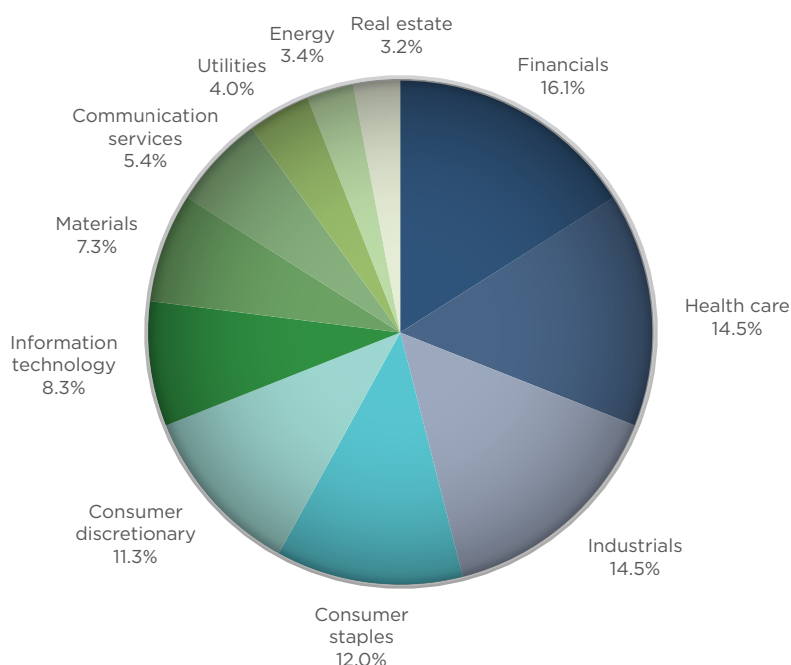
From 3/31/1986 - 6/30/2020. Past performance is no indication or guarantee of future performance.

• Not a deposit • Not FDIC or NCUSIF insured • Not guaranteed by the institution • Not insured by any federal government agency • May lose value

Annual performance

Year	Annual return
2010	4.9%
2011	-14.8%
2012	13.6%
2013	19.4%
2014	-7.4%
2015	-3.3%
2016	-1.9%
2017	21.8%
2018	-16.1%
2019	18.4%

Sector breakdown



MSCI EAFE covers approximately 85% of the market capitalization of each country. For more information, please visit www.msci.com/eafe



¹ Developed Markets countries in the MSCI EAFE Index include: Australia, Austria, Belgium, Denmark, Finland, France, Germany, Hong Kong, Ireland, Israel, Italy, Japan, the Netherlands, New Zealand, Norway, Portugal, Singapore, Spain, Sweden, Switzerland and the UK.

² MSCI FaCS provides absolute factor exposures relative to a broad global index - MSCI ACWI IMI. MSCI FaCS is a standard method for evaluating and reporting the Factor characteristics of equity portfolios. MSCI FaCS consists of Factor Groups (e.g. Value, Size, Momentum, Quality, Yield and Volatility) that have been extensively documented in academic literature and validated by MSCI Research as key drivers of risk and return in equity portfolios. For more information, please visit MSCI.com.



This material is not a recommendation to buy, sell, hold or roll over any asset, adopt an investment strategy, retain a specific investment manager or use a particular account type. It does not take into account the specific investment objectives, tax and financial condition or particular needs of any specific person. Investors should discuss their specific situation with their financial professional.

This product is sold by prospectus. Carefully consider the investment objectives, risks, charges and expenses. The product prospectus contains this and other important information. Investors should read them carefully before investing. To request a copy, go to nationwide.com/prospectus or call 1-800-848-6331.

Annuities have limitations. They are long-term vehicles designed for retirement purposes. They are not intended to replace emergency funds, to be used as income for day-to-day expenses or to fund short-term savings goals. Withdrawals are subject to income tax, and withdrawals before age 59½ may be subject to a 10% early withdrawal federal tax penalty. Please read the contract for complete details.

Nationwide Defined Protection is an individual single purchase payment deferred annuity with index-linked strategies issued by Nationwide Life Insurance Company, Columbus, Ohio. Please note, the contract does not directly participate in any stock or equity investments.

Guarantees and protections referenced within are subject to the claims-paying ability of Nationwide Life Insurance Company.

The product referred to herein is not sponsored, endorsed or promoted by MSCI, and MSCI bears no liability with respect to any such product or any index on which such product is based. The Contract contains a more detailed description of the limited relationship MSCI has with Nationwide and any related funds.

Nationwide, the Nationwide N and Eagle, Nationwide is on your side, and Nationwide Defined Protection are service marks of Nationwide Mutual Insurance Company.

©2020 Nationwide

AAM-0616AO (06/20)